

COFDM Power Amplifier

The PA power amplifier expands the possibilities of COFDM digital links on the market, since it can work with most transmitter types. Low intermodulation and high reliability make this amplifier especially interesting for broadcast and airborne applications.

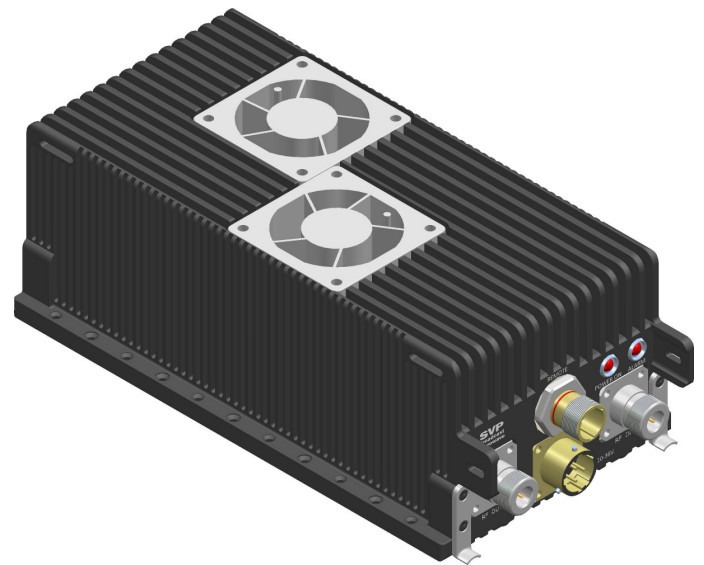
This Power Amplifier brings a new level of performance and reliability in high-power microwave transmissions. Packaged in a rugged aluminum housing. It is specifically designed to operate where a power amplifier resistant to severe environmental conditions is needed.

FEATURES

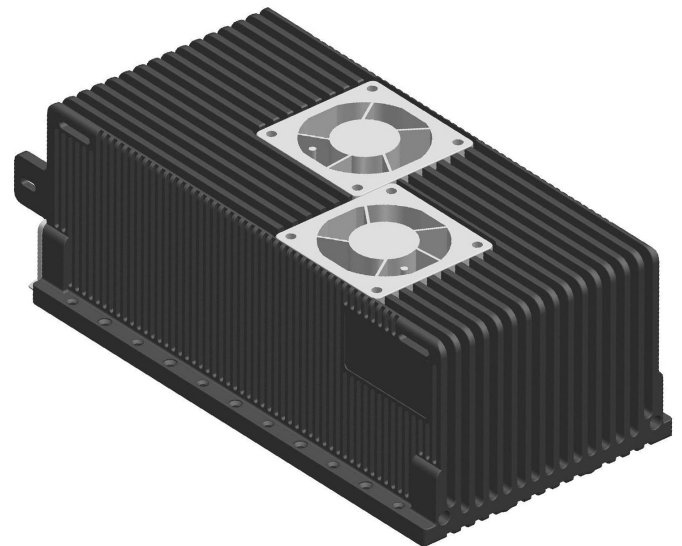
- LDMOS FET technology
- Isolator for protection against high VSWR
- ALC (automatic level control)
- Remote serial interface
- Digital broadcast systems (DVB-T2, DVB-T and ISDB-T)

REMOTE CONTROL

- Direct Power measurement (Digital)
- Reverse Power measurement (Digital)
- Alarm
- Standby /ON Mode
- Remote control compatible with HDT-02 transmitter



Front view



Rear view

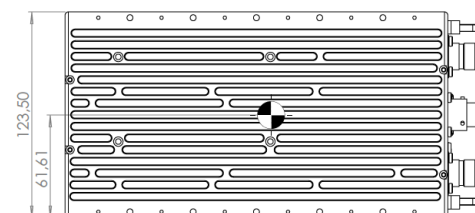
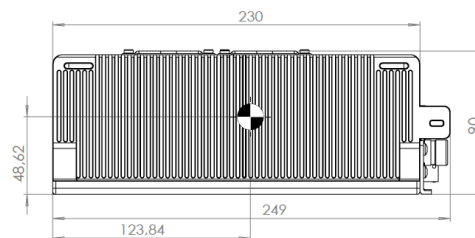
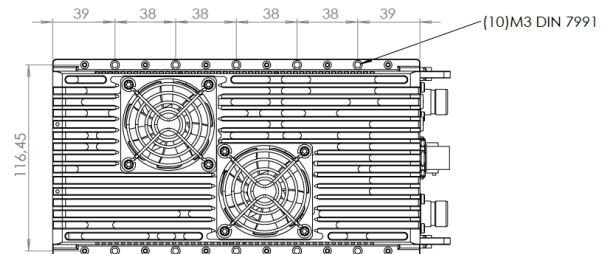
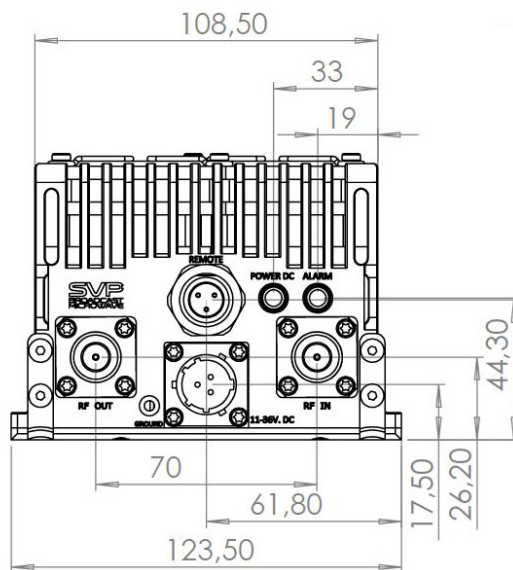
Characteristics

PA Ultralinear - 10 Watt

Frequency range:	1.3 to 1.55 GHz for 4W
& Output power:	2.0 to 2.5 GHz for 4W 4.4 to 5 GHz for 10W 5.0 to 5.3 GHz for 10W 6.8 to 7.3 GHz for 2W
Input level:	+13 dBm to +20 dBm (ALC)
Connectors:	Power supply: MS3112E12-3P Remote: D38999/24 2 x N-female (50 ohms)
Harmonic supression:	>60 dB typ.
Supply voltage:	12 - 36 V DC
Protection capabilites:	Reverse voltage Reverse RF
Case:	Milled aluminium waterproof
Power consumption:	100 W
Operating temperature range:	-20 to 50 °C
Mechanical dimensions:	249 x 123.5 x 90 mm
Weight:	Approx. 2.5 kg

HOW TO ORDER:

P/N	Frequency Range	Max. Output Power
PA-4-1315	1,300 - 1,550 MHz	4 Watt.
PA-4-2025	2,000 - 2,500 MHz	4 Watt.
PA-10-4450	4,400 - 5,000 MHz	10 Watt.
PA-10-5053	5,000 - 5,300 MHz	10 Watt.
PA-2-6873	6,800 - 7,300 MHz	2 Watt.



Design and specifications are subject to changes without prior notice. 05/2017